

General arrangements of acceptable headwall construction



Timber headwall



Steel (motorway barrier) headwall



**Timber and trench sheet headwall
(with tie bars)**



Concrete block headwall (full)

- Height of wall to invert $< 1\text{m}$ = wall thickness must be 225mm (9")
- Height of wall to invert $> 1\text{m}$ = wall thickness must be 460mm (18")
- Both walls to be battered back by 25mm per block rise.



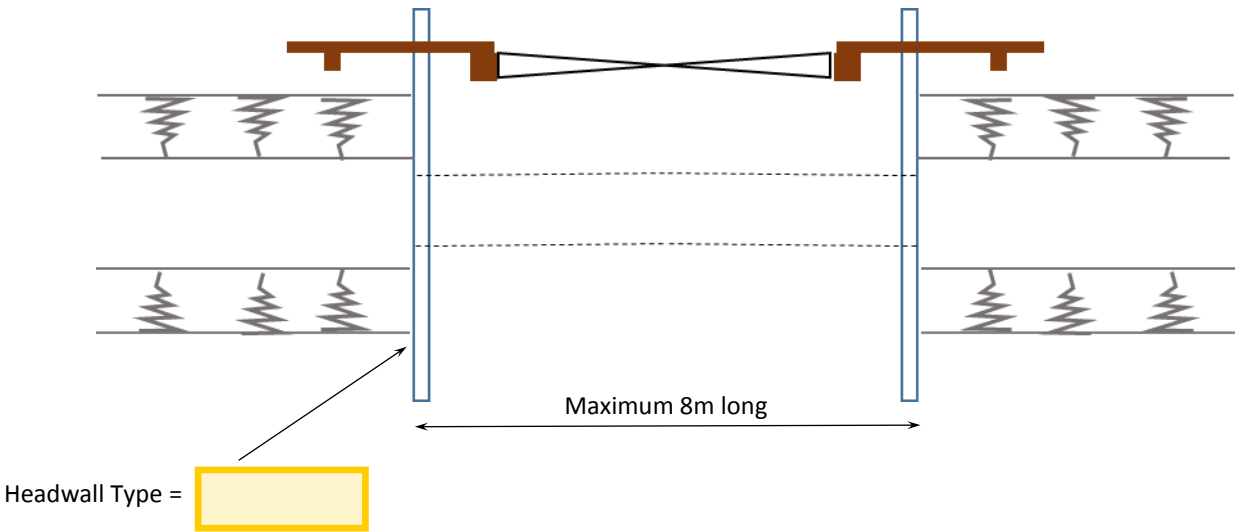
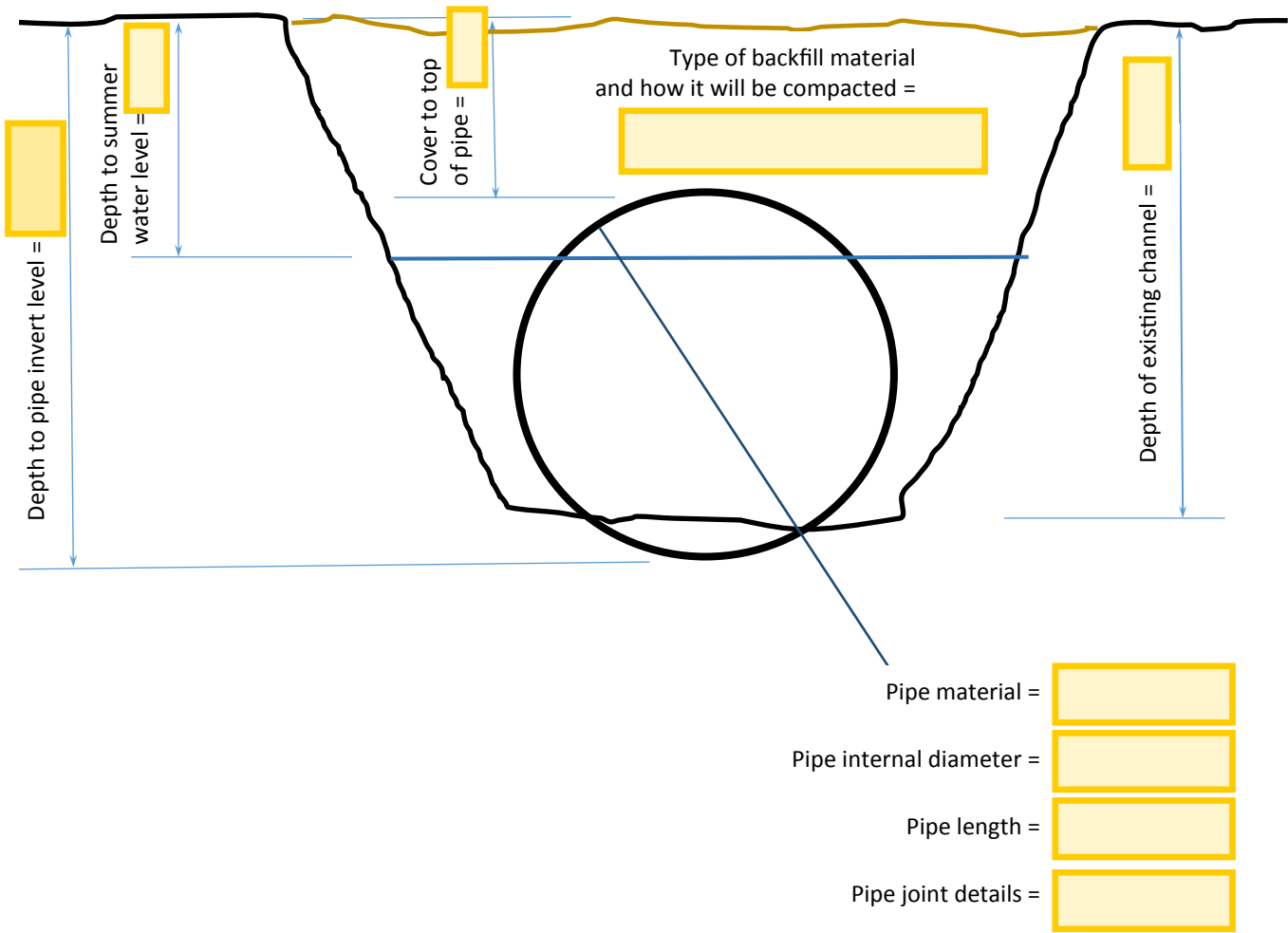
Concrete block headwall



Timber headwall

TYPICAL CROSS SECTION OF RHYNE – Details required for culverting

Please fill in all yellow boxes



CROSS SECTION THOUGH CHANNEL AND CULVERT